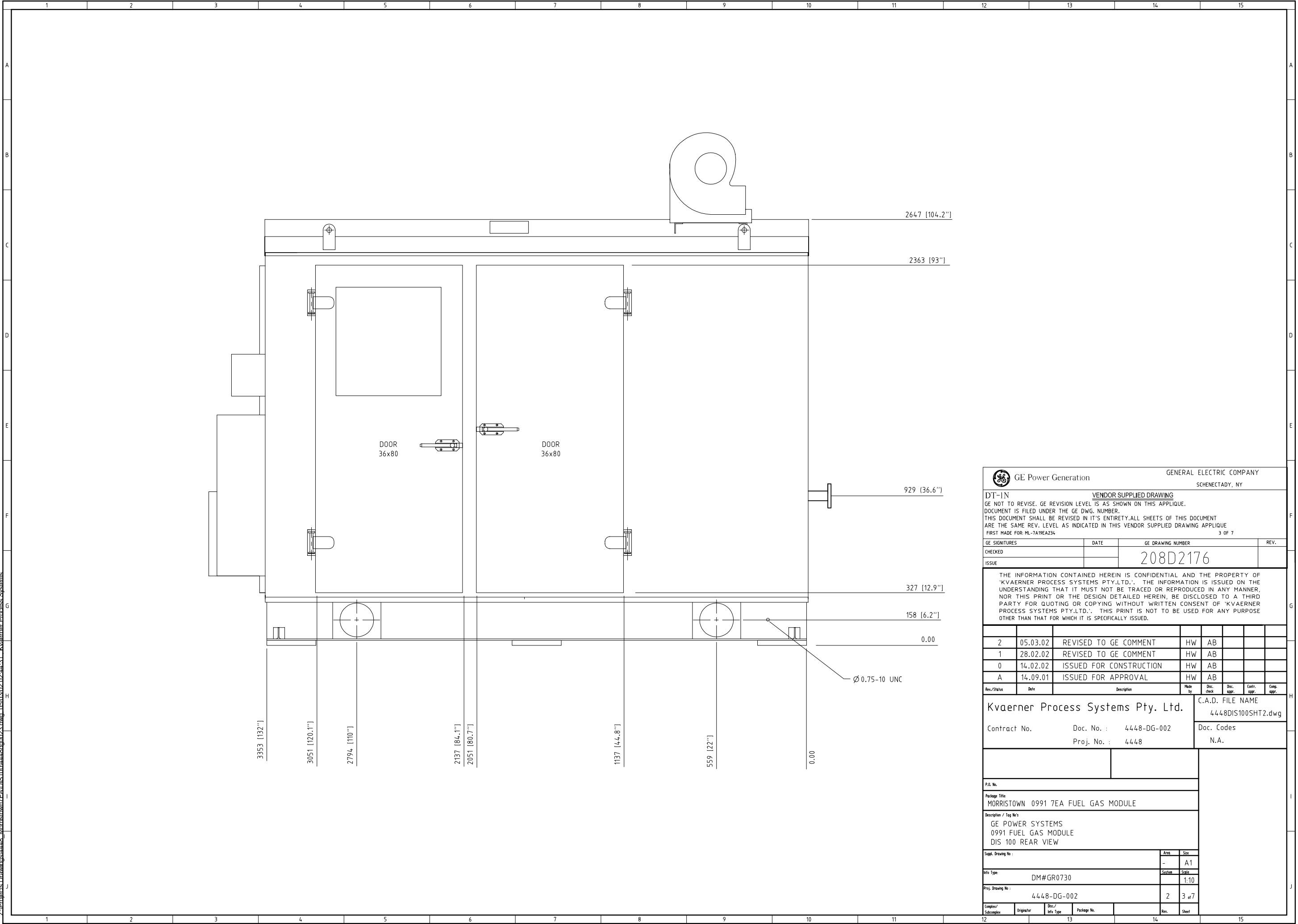
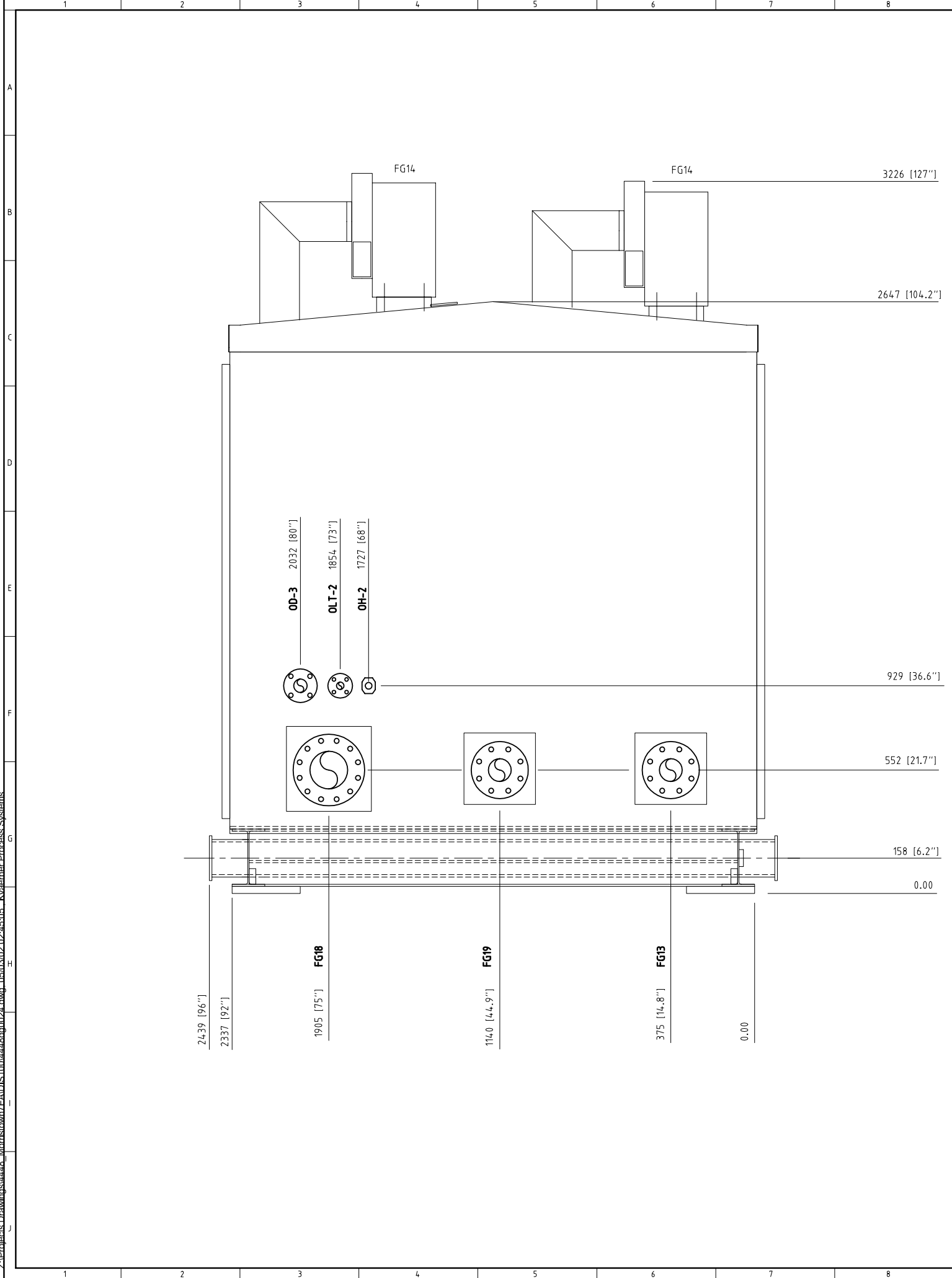
 GE Power Generation		GENERAL ELECTRIC COMPANY SCHENECTADY, NY					
DT-IN		VENDOR SUPPLIED DRAWING					
GE NOT TO REVISE. GE REVISION LEVEL IS AS SHOWN ON THIS APPLIQUE. DOCUMENT IS FILED UNDER THE GE DWG. NUMBER. THIS DOCUMENT SHALL BE REVISED IN IT'S ENTIRETY.ALL SHEETS OF THIS DOCUMENT ARE THE SAME REV. LEVEL AS INDICATED IN THIS VENDOR SUPPLIED DRAWING APPLIQUE FIRST MADE FOR: ML-7A1PEA234 2 OF 7							
GE SIGNATURES		DATE		GE DRAWING NUMBER			REV.
CHECKED				208D2176			
ISSUE							
THE INFORMATION CONTAINED HEREIN IS CONFIDENTIAL AND THE PROPERTY OF 'KVAERNER PROCESS SYSTEMS PTY.LTD.'. THE INFORMATION IS ISSUED ON THE UNDERSTANDING THAT IT MUST NOT BE TRACED OR REPRODUCED IN ANY MANNER, NOR THIS PRINT OR THE DESIGN DETAILED HEREIN, BE DISCLOSED TO A THIRD PARTY FOR QUOTING OR COPYING WITHOUT WRITTEN CONSENT OF 'KVAERNER PROCESS SYSTEMS PTY.LTD.'. THIS PRINT IS NOT TO BE USED FOR ANY PURPOSE OTHER THAN THAT FOR WHICH IT IS SPECIFICALLY ISSUED.							
2	05.03.02	REVISED TO GE COMMENT		HW	AB		
1	28.02.02	REVISED TO GE COMMENT		HW	AB		
0	14.02.02	ISSUED FOR CONSTRUCTION		HW	AB		
A	14.09.01	ISSUED FOR APPROVAL		HW	AB		
Rev./Status	Date	Description		Made by	Disc. check	Disc. appr.	Contr. appr.
Kvaerner Process Systems Pty. Ltd.				C.A.D. FILE NAME			
Contract No.				Doc. No. : 4448-DG-002		4448DIS100SHT3.dwg	
Proj. No. : 4448				Doc. Codes		N.A.	
P.O. No.							
Package Title:							
MORRISTOWN 0991 7EA FUEL GAS MODULE							
Description / Tag No's							
GE POWER SYSTEMS							
0991 FUEL GAS MODULE							
DIS 100 RIGHT VIEW							
Suppl. Drawing No :				Area		Size	
				-		A1	
Info Type:				System		Scale	
DM#GR0730						1:10	
Proj. Drawing No :				2		2 of 7	
4448-DG-002							
Complex/ Subcomplex	Originator	Disc./ Info Type	Package No.		Rev.	Sheet	



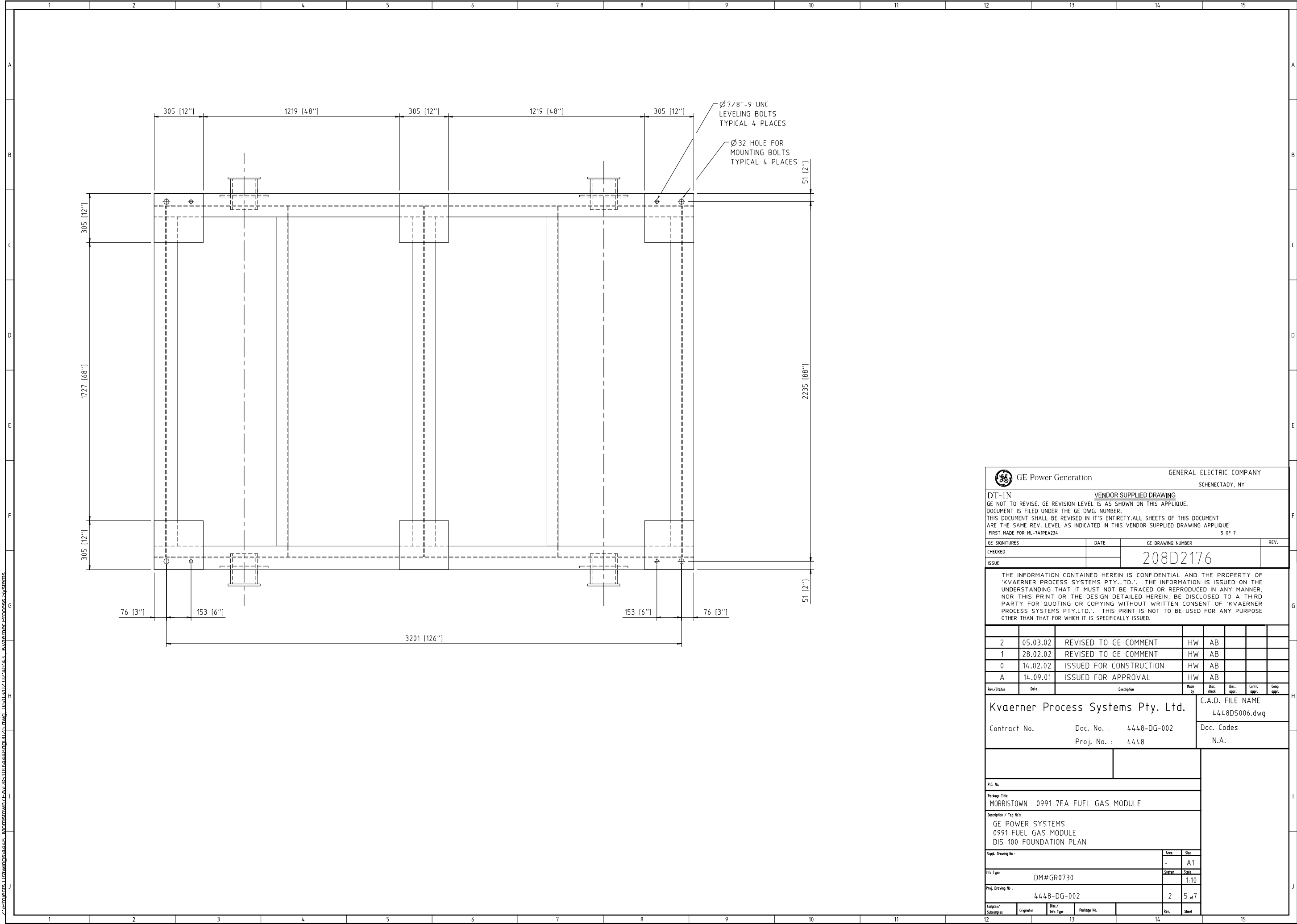
GE Power Generation		GENERAL ELECTRIC COMPANY SCHENECTADY, NY							
DT-IN		VENDOR SUPPLIED DRAWING							
GE NOT TO REVISE. GE REVISION LEVEL IS AS SHOWN ON THIS APPLIQUE. DOCUMENT IS FILED UNDER THE GE DWG. NUMBER. THIS DOCUMENT SHALL BE REVISED IN IT'S ENTIRETY.ALL SHEETS OF THIS DOCUMENT ARE THE SAME REV. LEVEL AS INDICATED IN THIS VENDOR SUPPLIED DRAWING APPLIQUE FIRST MADE FOR: ML-7A19EA234 3 OF 7									
GE SIGNATURES		DATE		GE DRAWING NUMBER		REV.			
CHECKED				208D2176					
ISSUE									
THE INFORMATION CONTAINED HEREIN IS CONFIDENTIAL AND THE PROPERTY OF 'KVAERNER PROCESS SYSTEMS PTY.LTD.'. THE INFORMATION IS ISSUED ON THE UNDERSTANDING THAT IT MUST NOT BE TRACED OR REPRODUCED IN ANY MANNER, NOR THIS PRINT OR THE DESIGN DETAILED HEREIN, BE DISCLOSED TO A THIRD PARTY FOR QUOTING OR COPYING WITHOUT WRITTEN CONSENT OF 'KVAERNER PROCESS SYSTEMS PTY.LTD.'. THIS PRINT IS NOT TO BE USED FOR ANY PURPOSE OTHER THAN THAT FOR WHICH IT IS SPECIFICALLY ISSUED.									
2		05.03.02		REVISED TO GE COMMENT		HW AB			
1		28.02.02		REVISED TO GE COMMENT		HW AB			
0		14.02.02		ISSUED FOR CONSTRUCTION		HW AB			
A		14.09.01		ISSUED FOR APPROVAL		HW AB			
Rev./Status	Date	Description			Made by	Disc. check	Disc. appr.	Contr. appr.	Comp. appr.
Kvaerner Process Systems Pty. Ltd.					C.A.D. FILE NAME 4448DIS100SHT2.dwg				
Contract No.					Doc. No. : 4448-DG-002				
					Proj. No. : 4448				
Doc. Codes					N.A.				
P.O. No.									
Package Title:					MORRISTOWN 0991 7EA FUEL GAS MODULE				
Description / Tag No's					GE POWER SYSTEMS 0991 FUEL GAS MODULE DIS 100 REAR VIEW				
Suppl. Drawing No :					Area		Size		
					-		A1		
Info Type:					System		Scale		
DM#GR0730							1:10		
Proj. Drawing No :					2		3 of 7		
4448-DG-002									
Complex/ Subcomplex	Originator	Disc./ Info Type	Package No.		Rev.		Sheet		



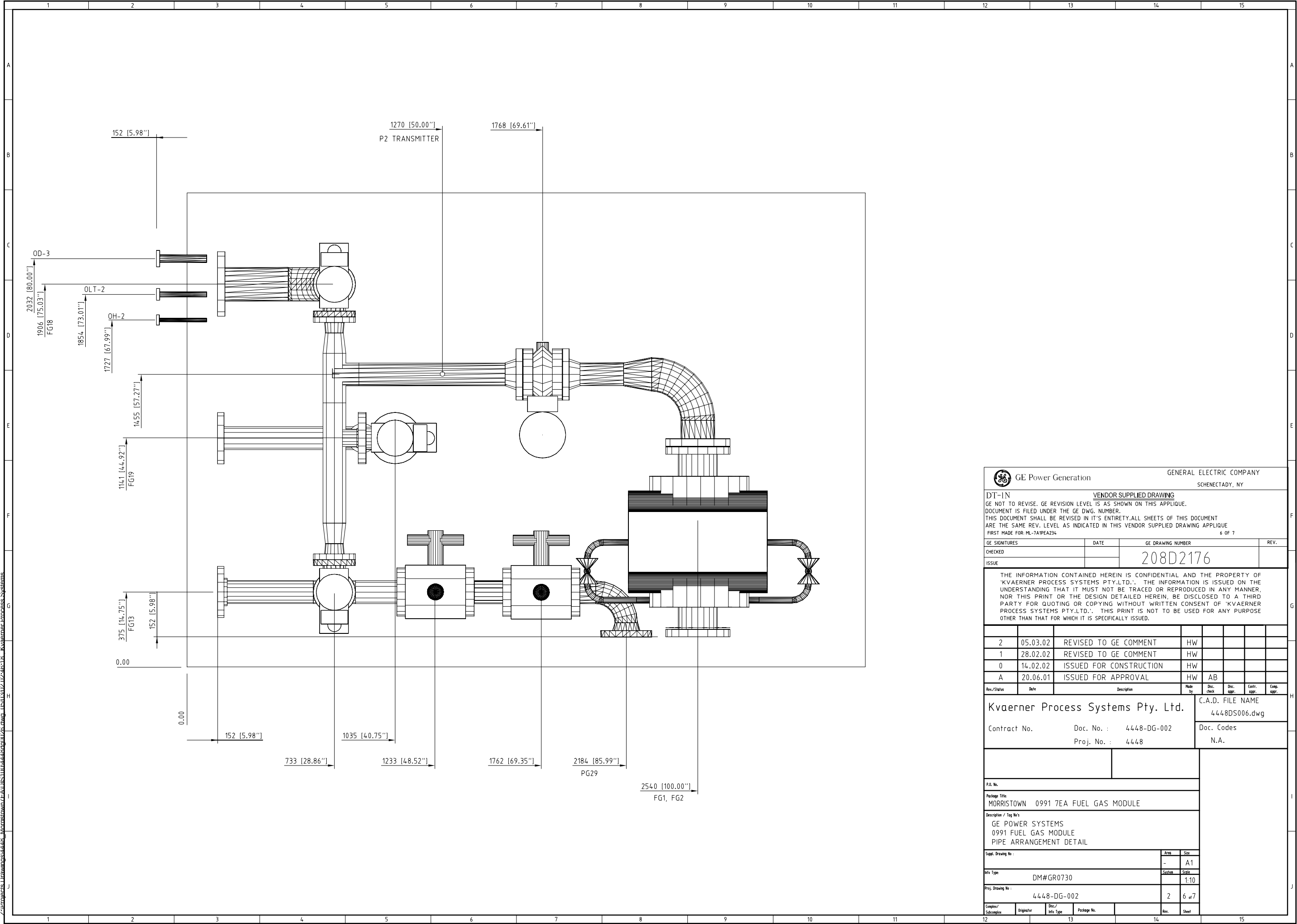
10	11	12	13	14	15
CONN	SIZE	TYPE	DESCRIPTION	DIST FROM EDGE OF SKID	
FG1	6.00 [152.4]	300# SS RF FLANGE	FUEL GAS INLET	-6.00 [152.4]	
FG2	2.00 [50.8]	300# SS RF FLANGE	STRAINER BLOWDOWN CONNECTION	-6.00 [152.4]	
FG3	1.00 [25.4]	304 SS TUBE	P2 - GAS VENT	0.00	
FG13	4.00 [101.6]	300# SS RF FLANGE	FUEL GAS FEED TRANSFER	-6.00 [152.4]	
FG14	7.00 x 3.63	CS DUCT	GAS COMPARTMENT VENT	0.00	
FG18	6.00 [152.4]	300# SS RF FLANGE	FUEL GAS FEED PRIMARY	-6.00 [152.4]	
FG19	4.00 [101.6]	300# SS RF FLANGE	FUEL GAS FEED SECONDARY	-6.00 [152.4]	
OH-2	1.00 [25.4]	SAE J518/C61	HYDRAULIC OIL INLET	+6.00 [152.4]	
OD-3	2.00 [50.8]	150# CS RF FLANGE	HYDRAULIC OIL DRAIN	+6.00 [152.4]	
OLT-2	1.00 [25.4]	150# SS RF FLANGE	TRIP OIL INLET	+6.00 [152.4]	
PG36	0.50 [12.7]	SS FNTP	INSTRUMENT AIR	+0.50 [12.7]	
PG29	4.00 [101.6]	300# SS RF FLANGE	PURGE AIR INTAKE	-6.00 [152.4]	
PG13	0.75 [19.1]	304 SS TUBE	TRANSFER PURGE VENT	0.00	

NOTES: POSITIVE SKID DIMENSIONS ARE OUTSIDE EDGE OF SKID AND NEGATIVE DIMENSIONS ARE INSIDE EDGE OF SKID.  
"RF" FLANGES ARE RAISED FACE FLANGED PER ANSI/ASME B16.5.

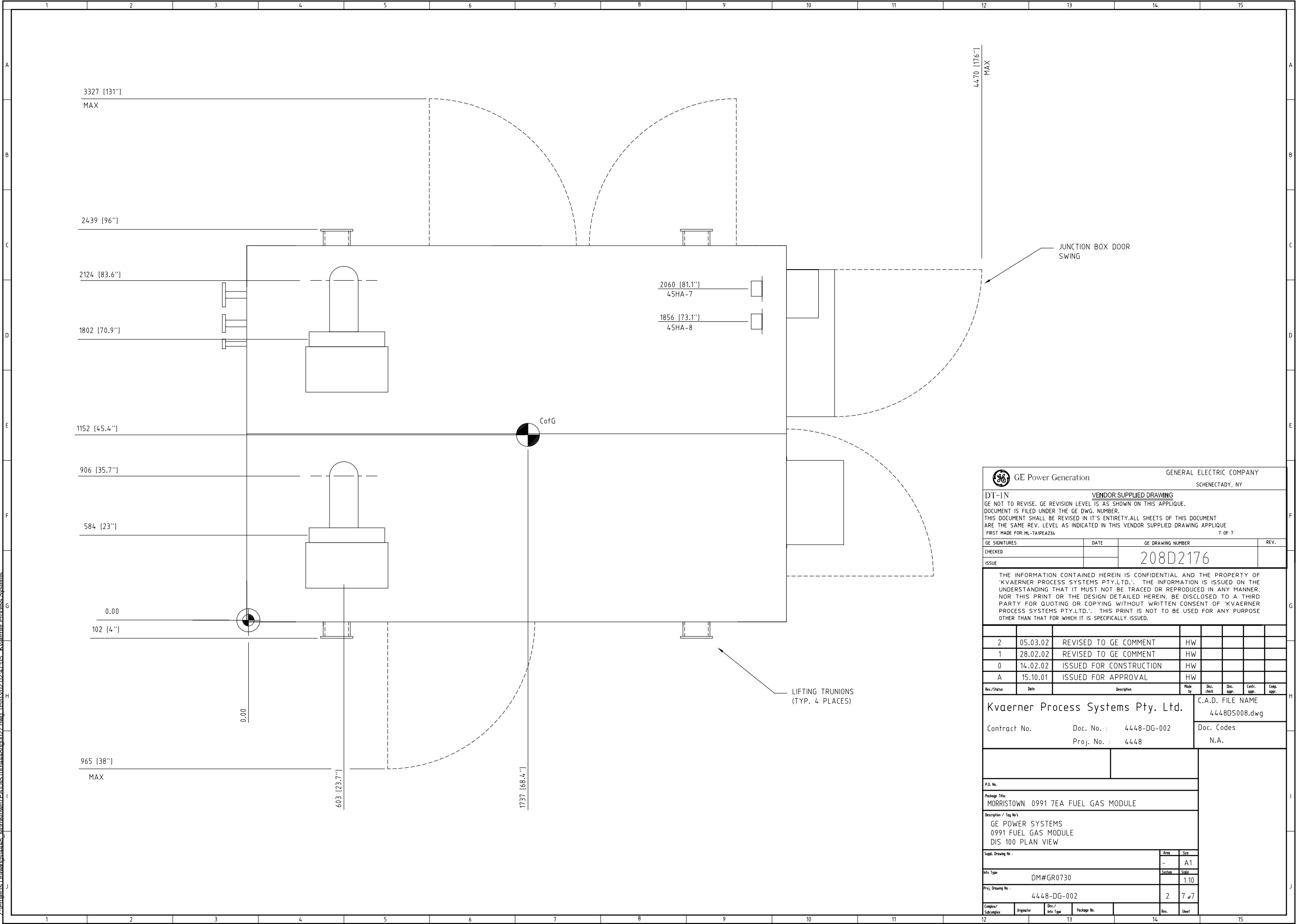
GE Power Generation		GENERAL ELECTRIC COMPANY SCHENECTADY, NY						
DT-IN		VENDOR SUPPLIED DRAWING						
GE NOT TO REVISE. GE REVISION LEVEL IS AS SHOWN ON THIS APPLIQUE. DOCUMENT IS FILED UNDER THE GE DWG. NUMBER. THIS DOCUMENT SHALL BE REVISED IN IT'S ENTIRETY.ALL SHEETS OF THIS DOCUMENT ARE THE SAME REV. LEVEL AS INDICATED IN THIS VENDOR SUPPLIED DRAWING APPLIQUE FIRST MADE FOR: ML-7A1PEA234 4 OF 7								
GE SIGNATURES		DATE		GE DRAWING NUMBER			REV.	
CHECKED				208D2176				
ISSUE								
THE INFORMATION CONTAINED HEREIN IS CONFIDENTIAL AND THE PROPERTY OF 'KVAERNER PROCESS SYSTEMS PTY.LTD.'. THE INFORMATION IS ISSUED ON THE UNDERSTANDING THAT IT MUST NOT BE TRACED OR REPRODUCED IN ANY MANNER, NOR THIS PRINT OR THE DESIGN DETAILED HEREIN, BE DISCLOSED TO A THIRD PARTY FOR QUOTING OR COPYING WITHOUT WRITTEN CONSENT OF 'KVAERNER PROCESS SYSTEMS PTY.LTD.'. THIS PRINT IS NOT TO BE USED FOR ANY PURPOSE OTHER THAN THAT FOR WHICH IT IS SPECIFICALLY ISSUED.								
2		05.03.02		REVISED TO GE COMMENT		HW		AB
1		28.02.02		REVISED TO GE COMMENT		HW		AB
0		14.02.02		ISSUED FOR CONSTRUCTION		HW		AB
A		14.09.01		ISSUED FOR APPROVAL		HW		AB
Rev./Status	Date	Description				Made by	Disc. check	Disc. appr.
Kvaerner Process Systems Pty. Ltd.		C.A.D. FILE NAME				4448DIS100SHT4.dwg		
Contract No.		Doc. No. : 4448-DG-002		Proj. No. : 4448		Doc. Codes		
						N.A.		
P.O. No.								
Package Title:								
Description / Tag No's								
GE POWER SYSTEMS								
0991 FUEL GAS MODULE								
DIS 100 LEFT VIEW								
Suppl. Drawing No :		Area		Size				
		-		A1				
Info Type:		System		Scale				
DM#GR0730				1:10				
Proj. Drawing No :		4448-DG-002		2		4 x7		
Complex/ Subcomplex	Originator	Disc./ Info Type	Package No.	Disc.		Sheet		



Z:\projects\Drawings\4448\_Morristown\EA\100\100-4448.dwg 10/10/2002 10:10:10 Kvaerner Process Systems



GE Power Generation		GENERAL ELECTRIC COMPANY SCHENECTADY, NY					
DT-1N		VENDOR SUPPLIED DRAWING					
GE NOT TO REVISE. GE REVISION LEVEL IS AS SHOWN ON THIS APPLIQUE. DOCUMENT IS FILED UNDER THE GE DWG. NUMBER. THIS DOCUMENT SHALL BE REVISED IN IT'S ENTIRETY.ALL SHEETS OF THIS DOCUMENT ARE THE SAME REV. LEVEL AS INDICATED IN THIS VENDOR SUPPLIED DRAWING APPLIQUE FIRST MADE FOR: ML-7A1PEA234 6 OF 7							
GE SIGNATURES		DATE		GE DRAWING NUMBER		REV.	
CHECKED				208D2176			
ISSUE							
THE INFORMATION CONTAINED HEREIN IS CONFIDENTIAL AND THE PROPERTY OF 'KVAERNER PROCESS SYSTEMS PTY.LTD.'. THE INFORMATION IS ISSUED ON THE UNDERSTANDING THAT IT MUST NOT BE TRACED OR REPRODUCED IN ANY MANNER, NOR THIS PRINT OR THE DESIGN DETAILED HEREIN, BE DISCLOSED TO A THIRD PARTY FOR QUOTING OR COPYING WITHOUT WRITTEN CONSENT OF 'KVAERNER PROCESS SYSTEMS PTY.LTD.'. THIS PRINT IS NOT TO BE USED FOR ANY PURPOSE OTHER THAN THAT FOR WHICH IT IS SPECIFICALLY ISSUED.							
2		05.03.02		REVISED TO GE COMMENT		HW	
1		28.02.02		REVISED TO GE COMMENT		HW	
0		14.02.02		ISSUED FOR CONSTRUCTION		HW	
A		20.06.01		ISSUED FOR APPROVAL		HW AB	
Rev./Status		Date		Description		Made by Disc. check Disc. app. Contr. app. Comp. app.	
Kvaerner Process Systems Pty. Ltd.						C.A.D. FILE NAME 4448DS006.dwg	
Contract No.						Doc. Codes N.A.	
Doc. No. : 4448-DG-002							
Proj. No. : 4448							
P.O. No.							
Package Title		MORRISTOWN 0991 7EA FUEL GAS MODULE					
Description / Tag No's		GE POWER SYSTEMS 0991 FUEL GAS MODULE PIPE ARRANGEMENT DETAIL					
Suppl. Drawing No :						A1	
Info Type:						Scale	
DM#GR0730						1:10	
Proj. Drawing No :						2 6 of 7	
Complex/ Subcomplex		Originator		Disc./ Info Type		Package No.	
						14	



GE Power Generation		GENERAL ELECTRIC COMPANY SCHENECTADY, NY					
DT-IN		VENDOR SUPPLIED DRAWING					
GE NOT TO REVISE. GE REVISION LEVEL IS AS SHOWN ON THIS APPLIQUE. DOCUMENT IS FILED UNDER THE GE DWG. NUMBER. THIS DOCUMENT SHALL BE REVISED IN IT'S ENTIRETY.ALL SHEETS OF THIS DOCUMENT ARE THE SAME REV. LEVEL AS INDICATED IN THIS VENDOR SUPPLIED DRAWING APPLIQUE FIRST MADE FOR:ML-7A1PEA2347 OF 7							
GE SIGNATURES		DATE		GE DRAWING NUMBER		REV.	
CHECKED				208D2176			
ISSUE							
THE INFORMATION CONTAINED HEREIN IS CONFIDENTIAL AND THE PROPERTY OF 'KVAERNER PROCESS SYSTEMS PTY.LTD.'. THE INFORMATION IS ISSUED ON THE UNDERSTANDING THAT IT MUST NOT BE TRACED OR REPRODUCED IN ANY MANNER, NOR THIS PRINT OR THE DESIGN DETAILED HEREIN, BE DISCLOSED TO A THIRD PARTY FOR QUOTING OR COPYING WITHOUT WRITTEN CONSENT OF 'KVAERNER PROCESS SYSTEMS PTY.LTD.'. THIS PRINT IS NOT TO BE USED FOR ANY PURPOSE OTHER THAN THAT FOR WHICH IT IS SPECIFICALLY ISSUED.							
2		05.03.02		REVISED TO GE COMMENT		HW	
1		28.02.02		REVISED TO GE COMMENT		HW	
0		14.02.02		ISSUED FOR CONSTRUCTION		HW	
A		15.10.01		ISSUED FOR APPROVAL		HW	
Rev./Status	Date	Description		Made by	Disc. check	Disc. appr.	Contr. appr.
Kvaerner Process Systems Pty. Ltd.				C.A.D. FILE NAME		4448DS008.dwg	
Contract No.				Doc. No. : 4448-DG-002		Doc. Codes	
				Proj. No. : 4448		N.A.	
P.O. No.							
Package Title:				MORRISTOWN 0991 7EA FUEL GAS MODULE			
Description / Tag No's				GE POWER SYSTEMS 0991 FUEL GAS MODULE DIS 100 PLAN VIEW			
Suppl. Drawing No :				Area		Size	
				-		A1	
Info Type:				System		Scale	
DM#GR0730						1:10	
Proj. Drawing No :				4448-DG-002		2 7 #7	
Complex/Subcomplex	Originator	Disc./Info Type	Package No.	Disc.		Sheet	